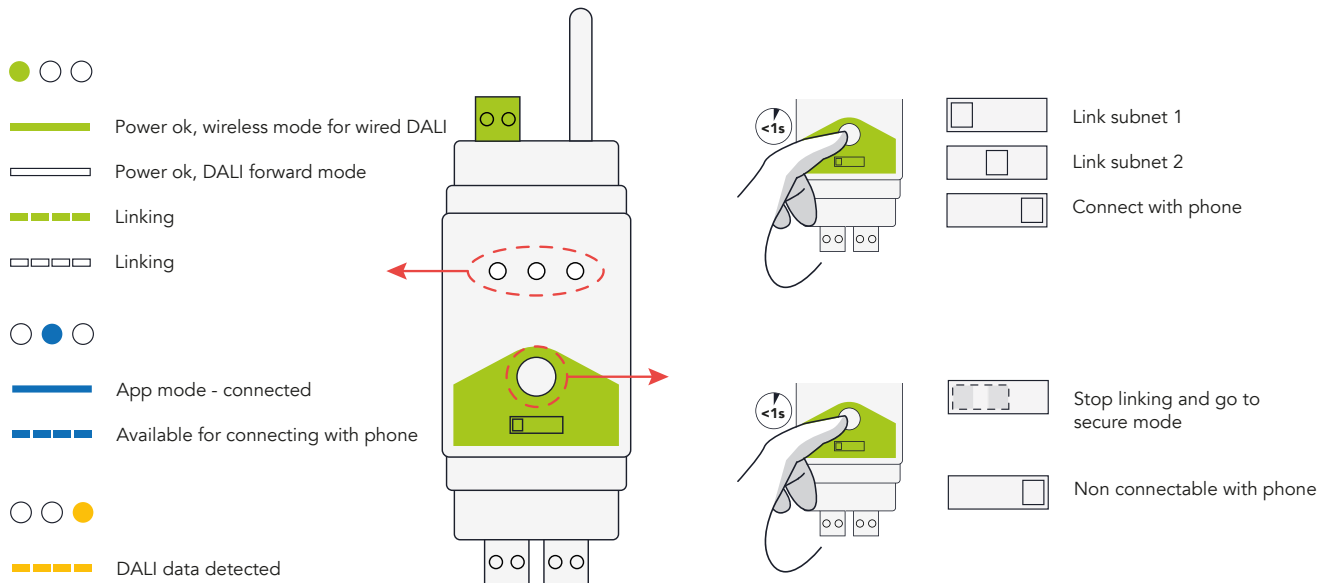


Instructions for use

W-DALI DIN RAIL OPERATION

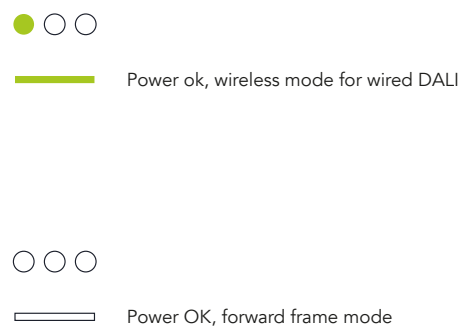
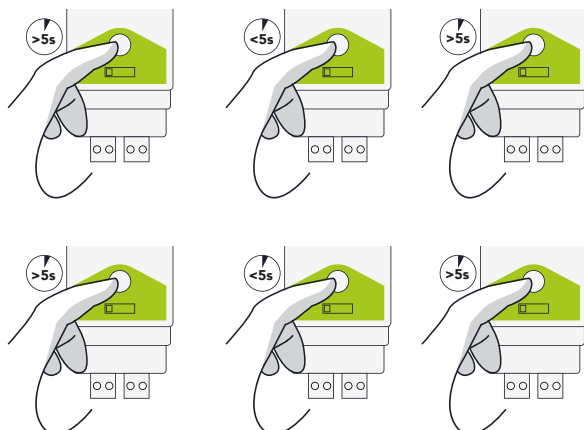
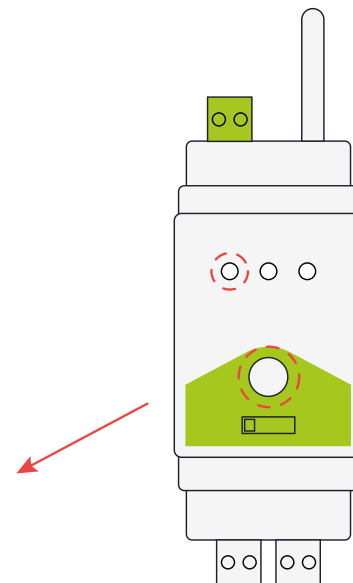


W-DALI DIN RAIL MODES

Green LED indicates LumenRadio wireless for wired DALI transparent operation. This is the default mode.

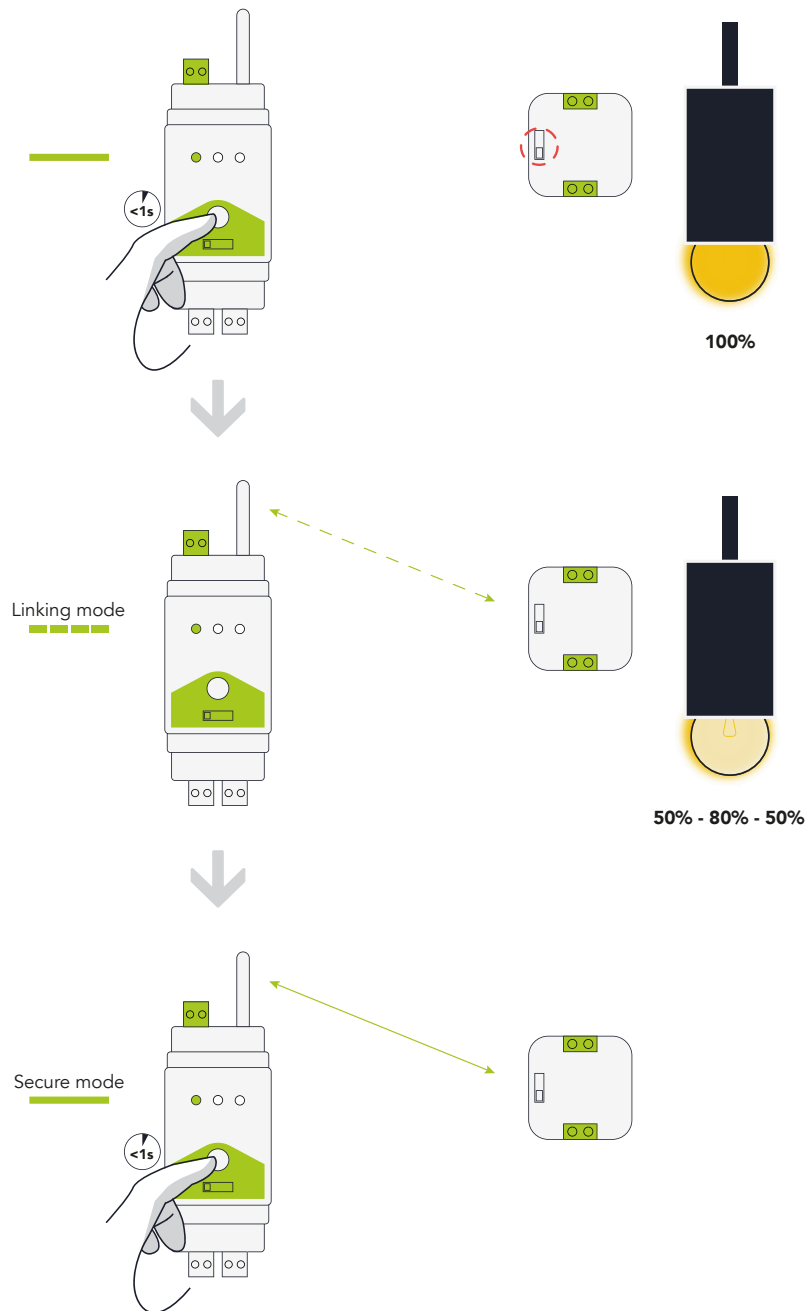
White LED indicates DALI forward frame mode for basic lighting control setups. In this mode only DALI forward frames will be sent.

Only the W-DALI DIN rail requires modes settings, no additional settings are needed for the W-DALI node.



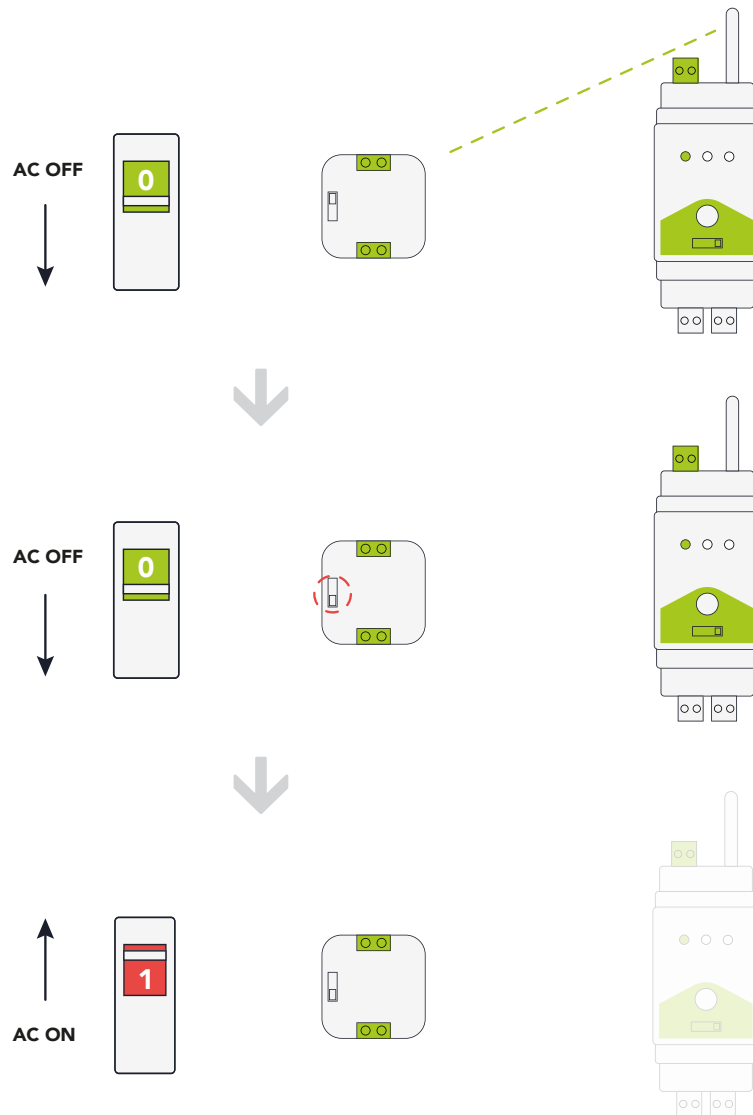
To manually link W-DALI nodes to the system, follow these steps:

1. On both the W-DALI DIN rail and W-DALI node, set the subnet switch to either subnet 1 or 2. This will allow for simultaneous linking of two different W-DALI networks.
2. Press and release the button on the front panel of the W-DALI DIN rail within 1 second.
3. The W-DALI nodes that receive the linking signal from the W-DALI DIN rail will start a pulsing fade with an intensity of 50% - 80% - 50%.
4. Wait for all W-DALI nodes to join the system.
5. Once all nodes have joined, press the button again on the W-DALI DIN rail to stop the linking process and enter operational mode. Alternatively, If the button is not pressed, the W-DALI DIN rail will automatically enter operational mode after 1 hour.



To unlink W-DALI nodes, please follow these steps:

1. Disconnect the power supply to the W-DALI node that needs to be unlinked.
2. Change the position of the switch to the opposite setting.
3. Restore power to the W-DALI node.
4. The W-DALI node is now reset and ready to be linked again.



An alternative method for manually linking W-DALI nodes in systems with more than 2 subnets:

1. Disconnect the power supply to the W-DALI node that should not be linked.
2. Press and release the button on the front panel within 1 second of the first W-DALI DIN rail.
3. Wait for all W-DALI nodes to join the system.
4. Once all nodes have joined, press the button again on the W-DALI DIN rail to stop the linking process and enter operational mode.
5. Restore power to the next batch of W-DALI nodes that should be linked to the next W-DALI DIN rail. There is no need to disconnect power to the already linked W-DALI nodes.
6. Repeat steps 2 to 5 until all W-DALI nodes have been linked.

