

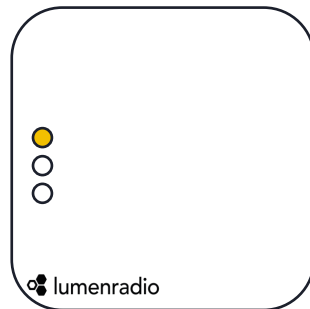
# 1 Step-by-step guide

**HOW TO UPDATE FROM OLDER 2.1.1 VERSION TO NEWER VERSION 3.X AND ABOVE**  
**REMEMBER, YOU WILL HAVE TO DO THE FIRMWARE UPDATE ON ALL NODES!**

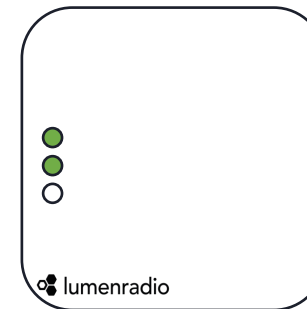
1. Download the firmware and save it at a place you can find it from the nRF connect app.
  - a) [W-Modbus support page](#) (You find the file under Firmware)
  - b) [W-BACnet support page](#) (You find the file under Firmware)
2. If you do not already have it, download nRF Connect app
  - [nRF Connect for Mobile](#) on App Store
  - [nRF Connect for Mobile](#) on Google play store
3. [Watch this 5 min Youtube video](#) how to do this including screen recording from iOS device.
4. Alternatively: A written step-by-step guide on the next page if you prefer that instead of the video.

# 1 How do I see that I have version 2.1.1 or below?

## Gateway



## Node

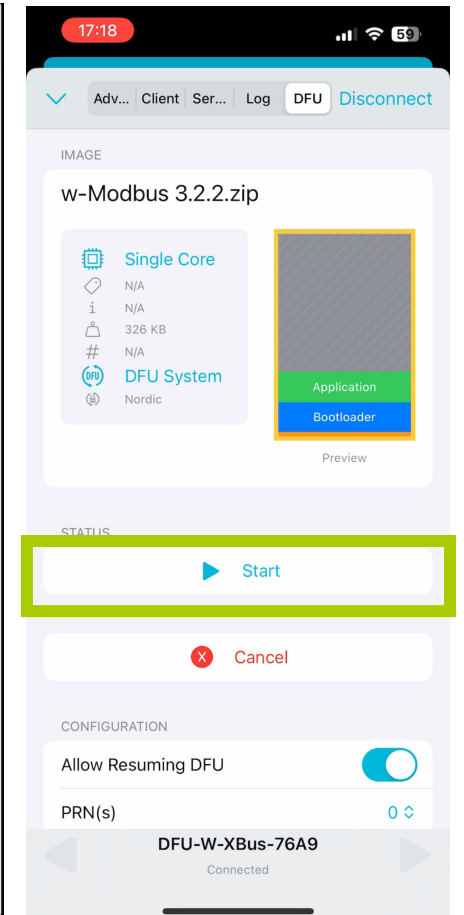
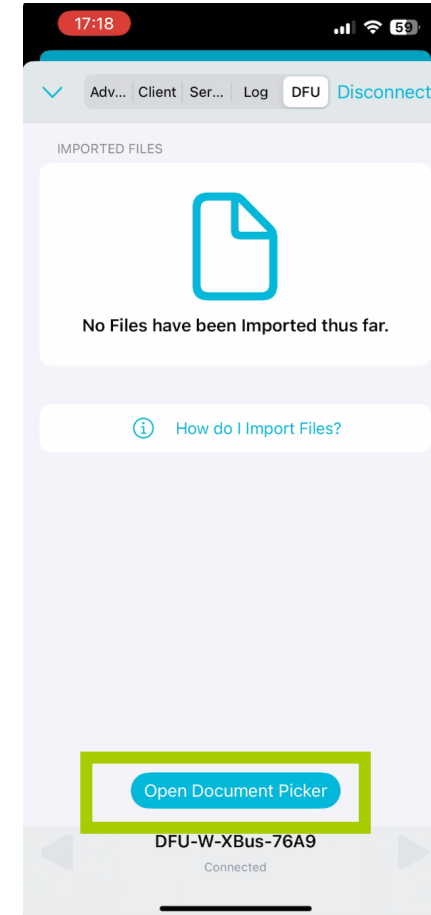
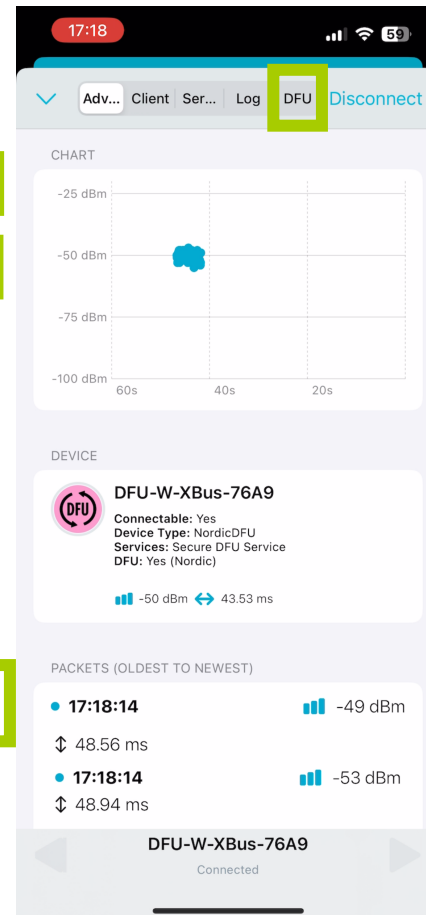
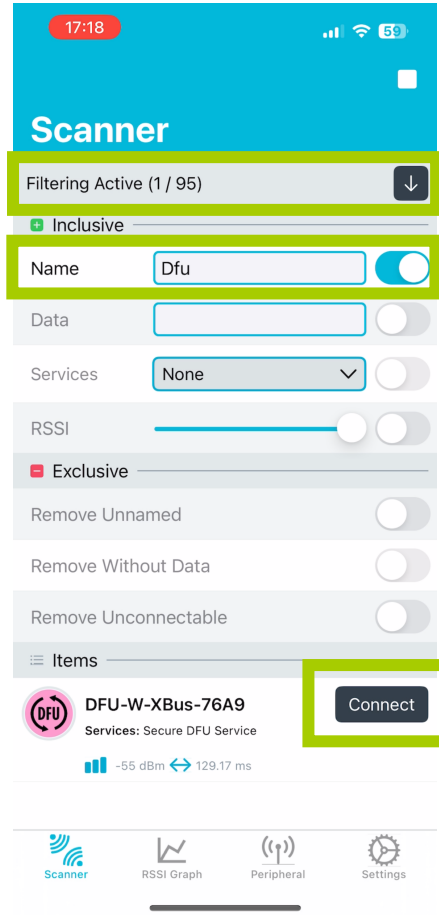


The Gateway will have a steady yellow LED on top and the node will have Top led as steady green. Second LED will be either steady green or steady red

# 2

## iOS: Step-by-step guide on the gateway

### Gateway



1. Press and hold down the button on the LumenRadio device for 20 seconds. Release the button once you see RED on the mid LED. Mid LED will switch to blue after 10 seconds and then to red after 20 seconds.

2. Open nRF Connect app and start scanning. Press the "No filter" and write "Dfu" in the name field. You should now only see one device. Connect to it.

3. Once connected, go to the DFU tab.

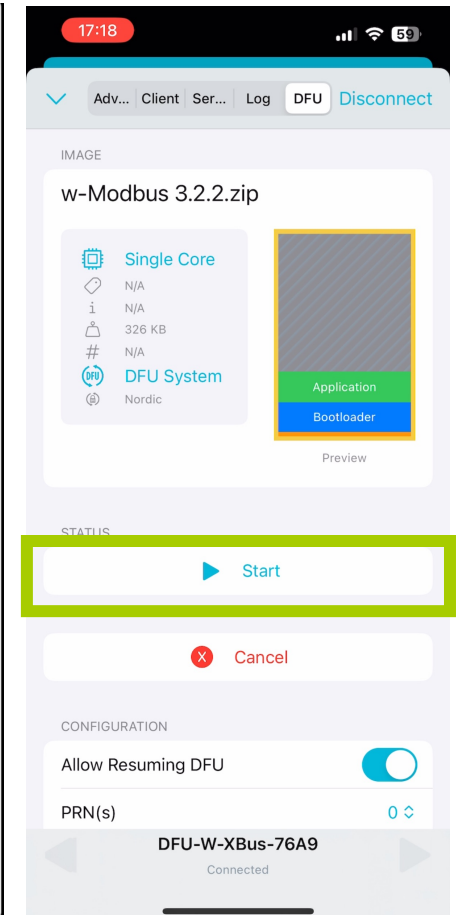
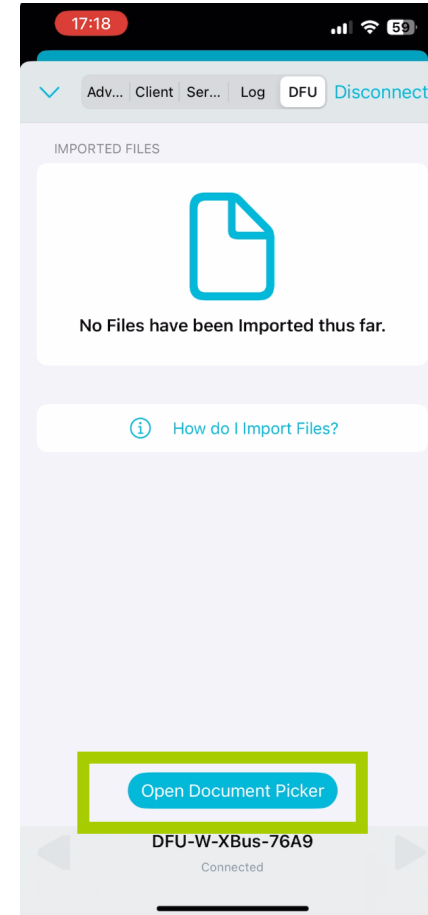
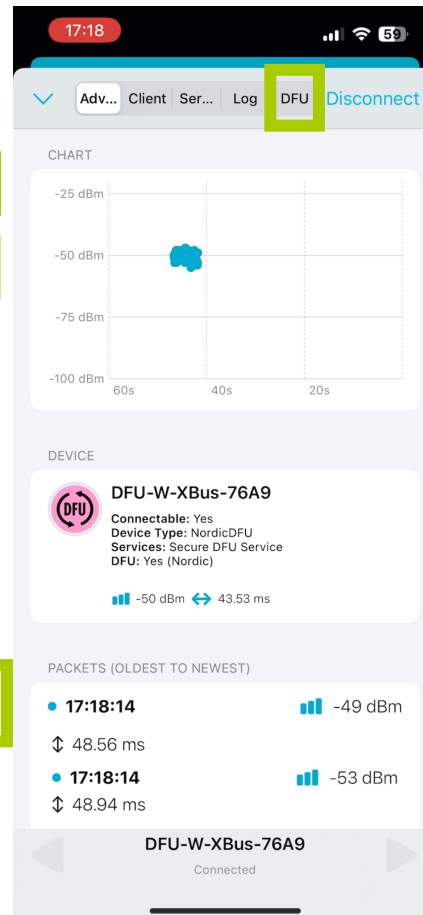
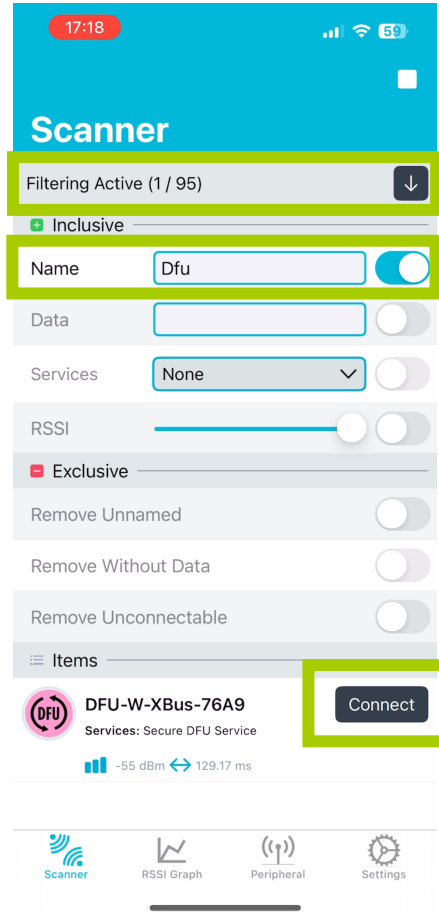
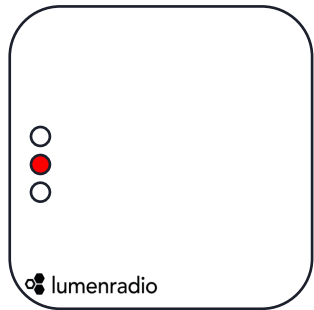
4. Select the file you have downloaded from our webpage

5. Start the DFU update by pressing start. It will pause for a short time at 50%. You will get a success message once complete. Once complete, the DIN rail LEDs will start sweeping blue.

# 3

## iOS: Step-by-step guide on the nodes

### Node



1. Press and hold down the button on the LumenRadio device for 20 seconds. Release the button once you see RED on the mid LED. Mid LED will switch to blue after 10 seconds and then to red after 20 seconds.

2. Open nRF Connect app and start scanning. Press the "No filter" and write "Dfu" in the name field. You should now only see one device. Connect to it.

3. Once connected, go to the DFU tab.

4. Select the file you have downloaded from our webpage

5. Start the DFU update by pressing start. It will pause for a short time at 50%. You will get a success message once complete. Once complete, the DIN rail LEDs will start sweeping blue.

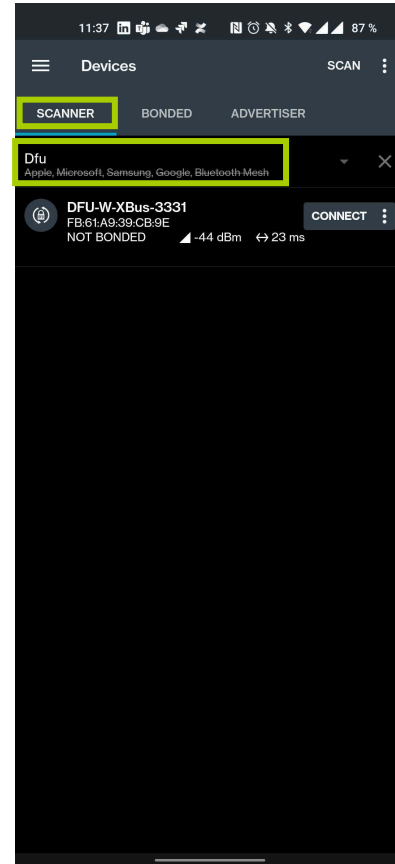
# 2

## Android: Step-by-step guide on the gateway

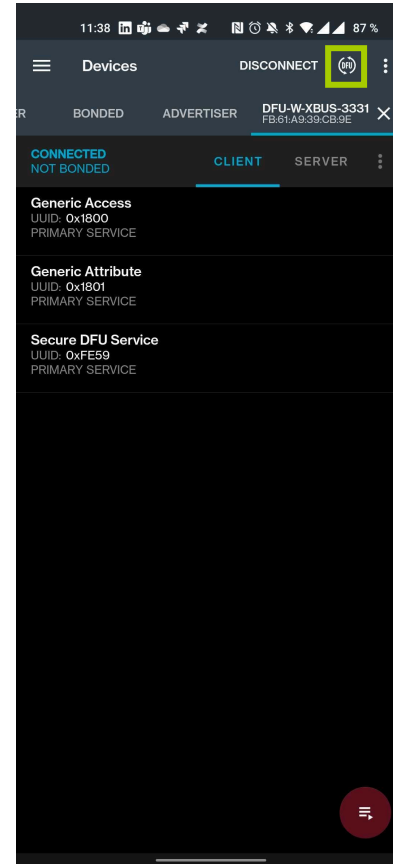
### Gateway



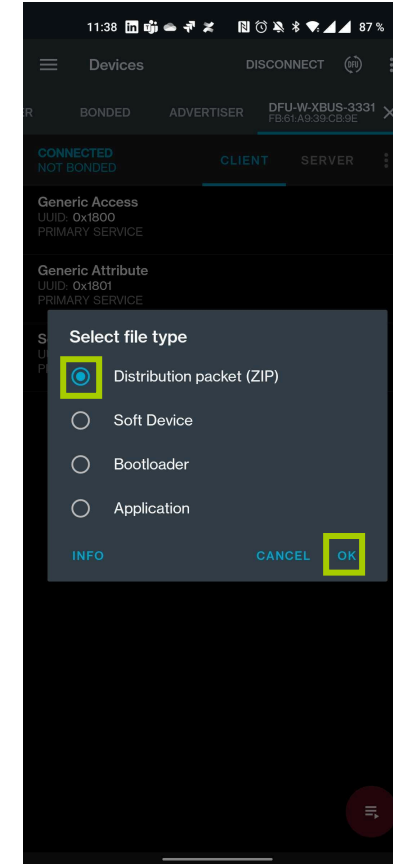
1. Press and hold down the button on the LumenRadio device for 20 seconds. Release the button once you see RED on the mid LED. Mid LED will switch to blue after 10 seconds and then to red after 20 seconds.



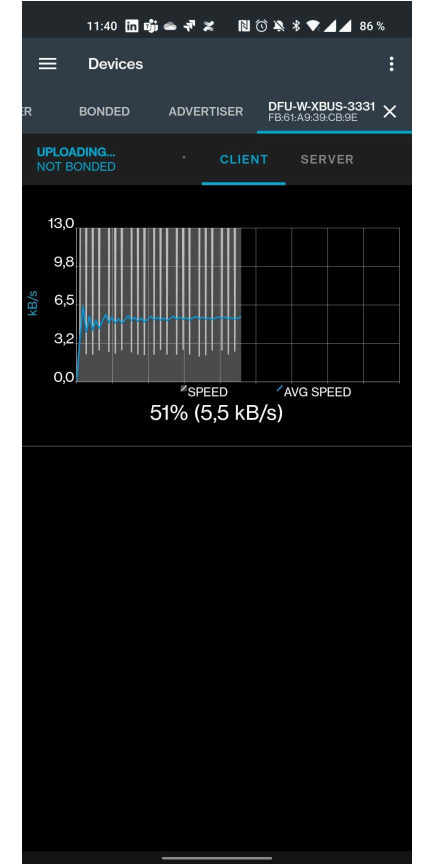
2. Open nRF Connect app and select the "SCANNER" tab. Press "No filter" and write "Dfu" in the name field. You should now only see one device. Connect to it by pressing the "CONNECT" button.



3. Once connected, press DFU button in the top right corner



4. Select "Distribution packet (ZIP)" in the selector that appears. Press OK and navigate to the file you have downloaded from our web page.

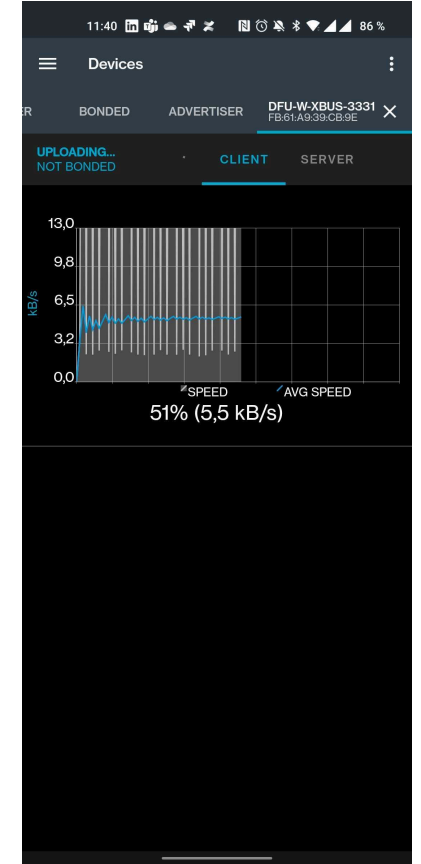
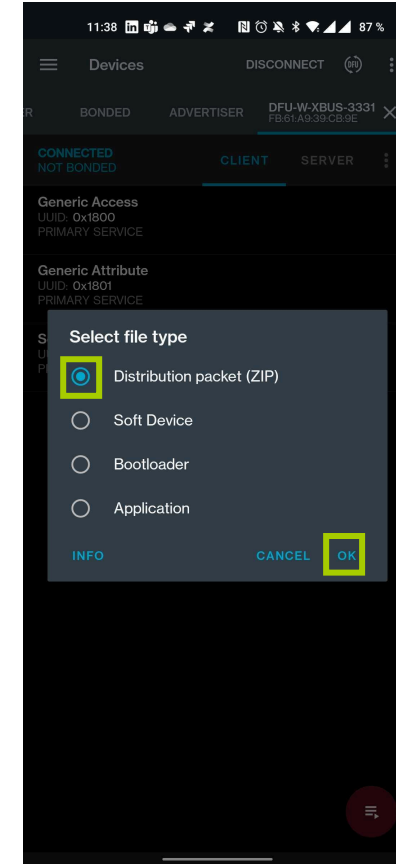
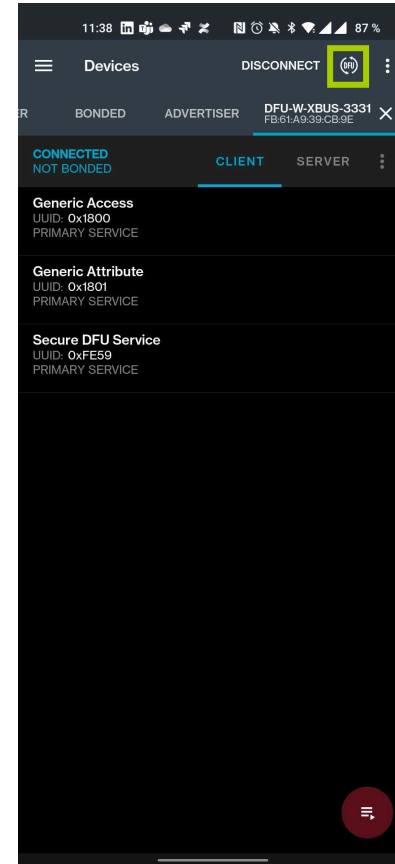
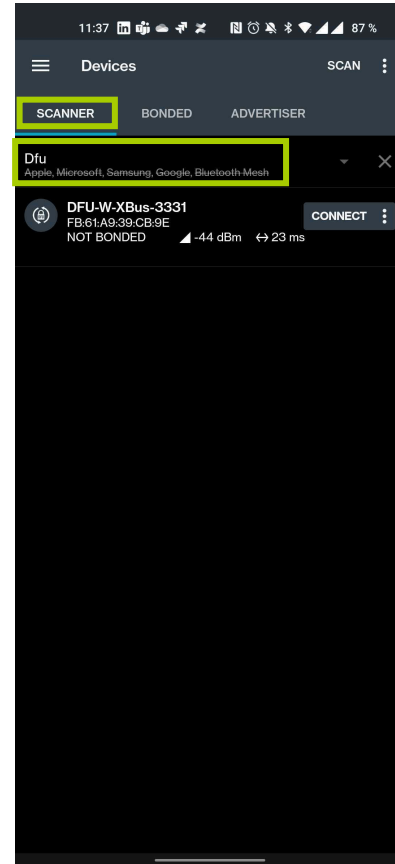
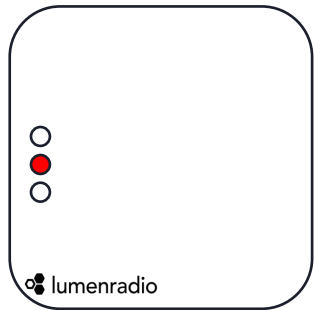


5. Once the file is selected, the update will start automatically. You will see a screen with a progress bar. It will go to 100% twice before the update is fully complete. Once complete, the DIN rail LEDs will start sweeping blue.

# 3

## Android: Step-by-step guide on the DIN rail nodes

### Node



1. Press and hold down the button on the LumenRadio device for 20 seconds. Release the button once you see RED on the mid LED. Mid LED will switch to blue after 10 seconds and then to red after 20 seconds.

2. Open nRF Connect app and select the "SCANNER" tab. Press "No filter" and write "Dfu" in the name field. You should now only see one device. Connect to it by pressing the "CONNECT" button.

3. Once connected, press DFU button in the top right corner

4. Select "Distribution packet (ZIP)" in the selector that appears. Press OK and navigate to the file you have downloaded from our web page.

5. Once the file is selected, the update will start automatically. You will see a screen with a progress bar. It will go to 100% twice before the update is fully complete. Once complete, the DIN rail LEDs will start sweeping blue.