

Firmware Update Instructions

Follow these instructions to update a W-Modbus or W-BACnet unit. To perform the update, you will need an iOS or Android phone with Bluetooth and internet connectivity.

The recommended way to update your devices is to use the LumenRadio mobile app, but an alternative method is available for older devices. The alternative method can also be used when individual nodes need to be updated directly.

Table of Content

Firmware Update Instructions.....	1
<i>Firmware update instruction using LumenRadio mobile app</i>	<i>2</i>
1. Install the mobile app	2
2. Activate Bluetooth on the gateway	2
3. Update firmware.....	2
Firmware update on older devices and on individual nodes	3
<i>Step by step instruction manual update with iOS</i>	<i>3</i>
<i>Step by step instruction manual update with Android.....</i>	<i>5</i>

Firmware update instruction using the LumenRadio mobile app

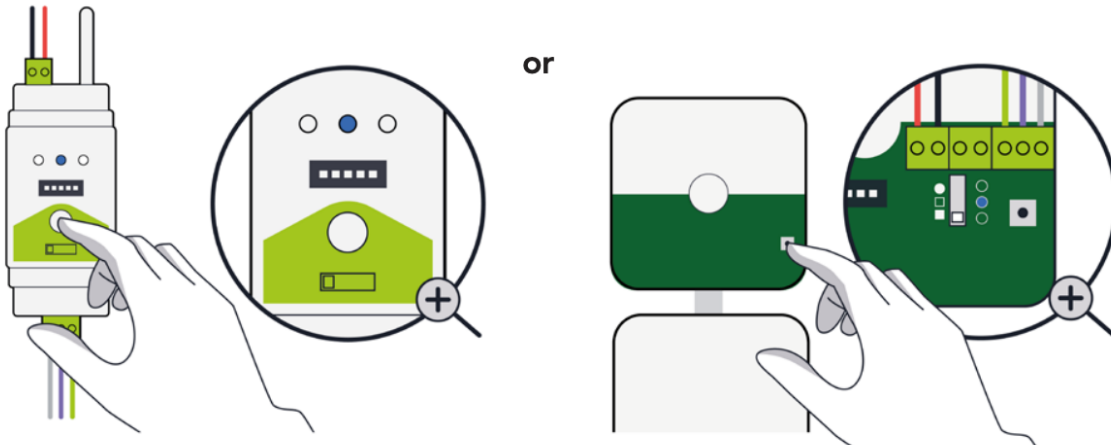
1. Install the mobile app

[Google Play - W-BACnet](#)

[Apple App Store - W-BACnet](#)

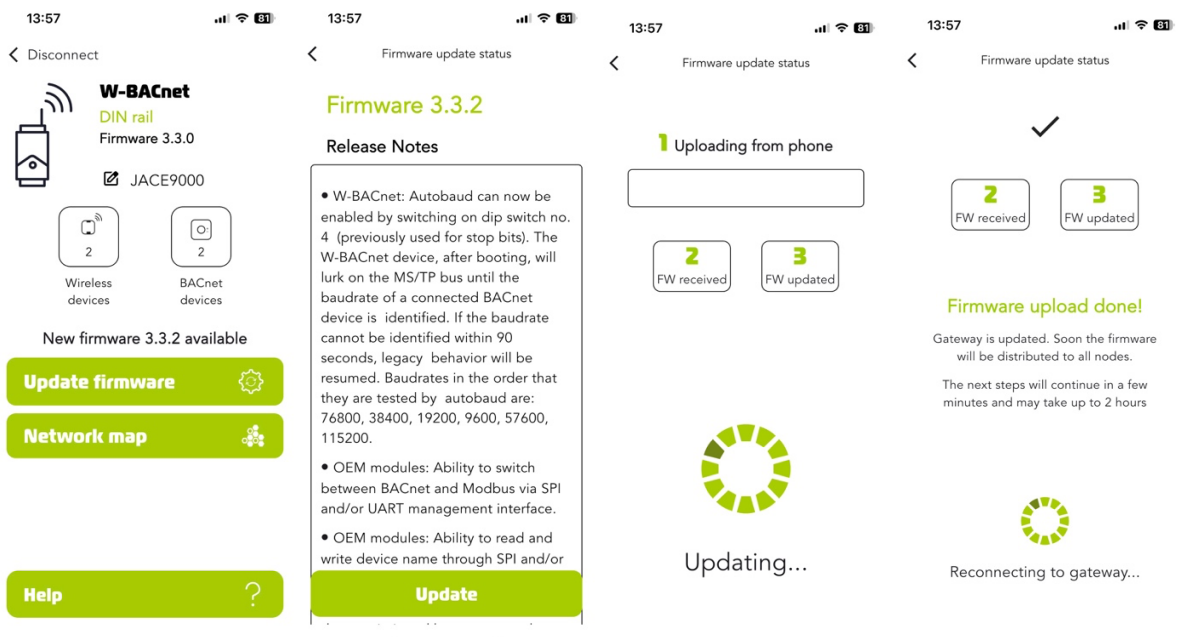
2. Activate Bluetooth on the gateway

Activate Bluetooth on the gateway by pressing the button 3 times. The middle LED should flash blue twice. The device will be connectable for 3 minutes.



3. Update firmware

Open the W-BACnet or W-Modbus app. Press the button labelled "Update firmware", read the release notes and then press the button labelled "Update". The mobile phone will now update the gateway. The gateway will reboot and reestablish the network. The gateway will send the firmware over the air to all nodes. Once all the nodes have received the update, the network will restart again. You can follow the progress in the mobile app but note that doing so will reduce the network bandwidth significantly by 33 % during the time the app is connected.



Firmware update on older devices and on individual nodes

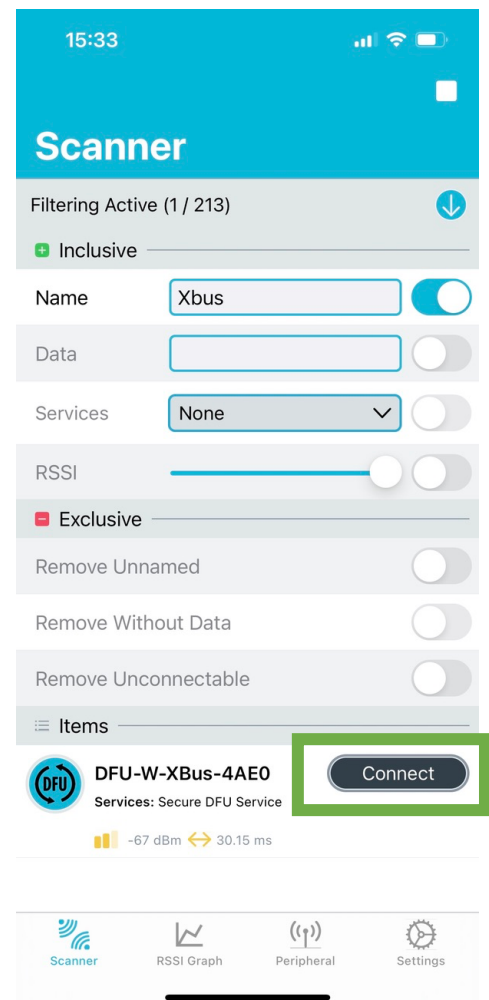
This method of updating the LumenRadio firmware requires you to first download the latest firmware from LumenRadio's website.

If you are updating your devices from version 2.2.3 or below to version 3.0.0 or above, you will need to repeat this step for all devices in the network. If you are updating from version 3.0.0 or above to the latest version, you will only need to do this step once at the gateway.

Note: The gateway will override your firmware update if you update only at the nodes (This is only applicable for version 3.0.0 and above).

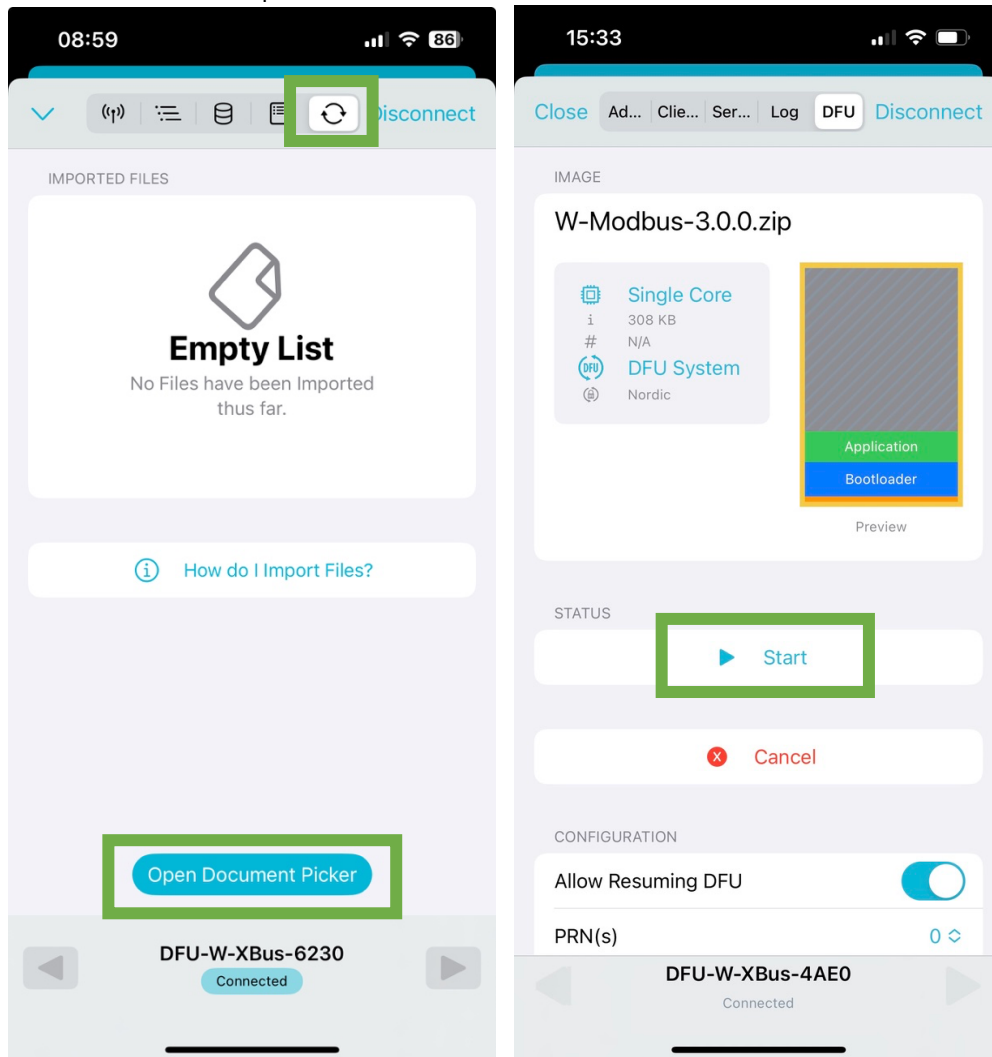
Step by step instruction manual update with iOS

1. [Download](#) and store the new firmware to your phone. Save it in any location.
2. Download the app [nRF Connect for Mobile](#) from App Store.
Open the mobile app and activate Bluetooth on the phone.
3. On the LumenRadio device: Enter bootloader mode for the unit by pressing and holding down the push button for 20 seconds. When the mid LED turns red then release the button.
4. In the nRF Connect app: Scan and connect to the unit
Press Scan in the top left corner of the app, and press Connect on the W-Modbus-DFU or W-Xbus-DFU or DFU-W-Xbus-1XYZ unit in the list. If the device does not show up in the list of found devices, redo step 3 and make sure you are not using any filters.



5. Select firmware to upload

Press the DFU symbol in the top right corner of the app. Press Open Document Picker and then select the firmware you downloaded to your phone in step 1. Note that in the example below we use the W-Modbus software. The procedure looks the same for W-BACnet but the file name is W-BACnet-version.zip.

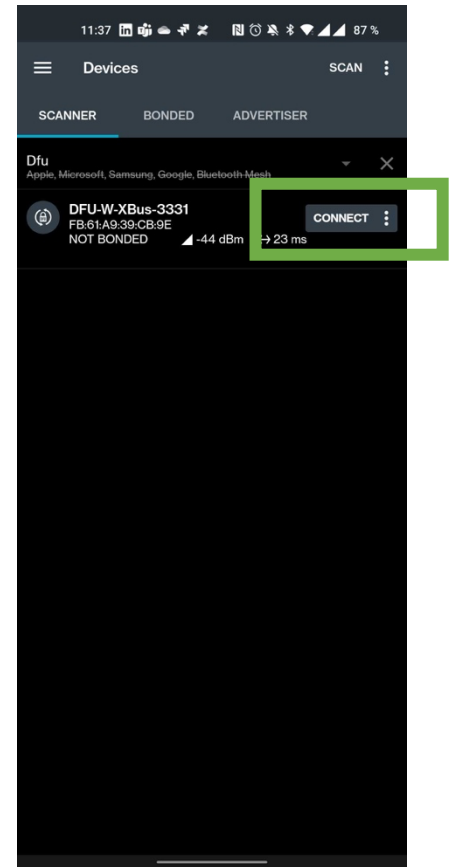


6. Wait for transfer to complete

Wait until the transfer is 100% and you get the status Application has been sent successfully from the app. Press Disconnect in the top right corner and wait for the unit to restart. The update is now complete!

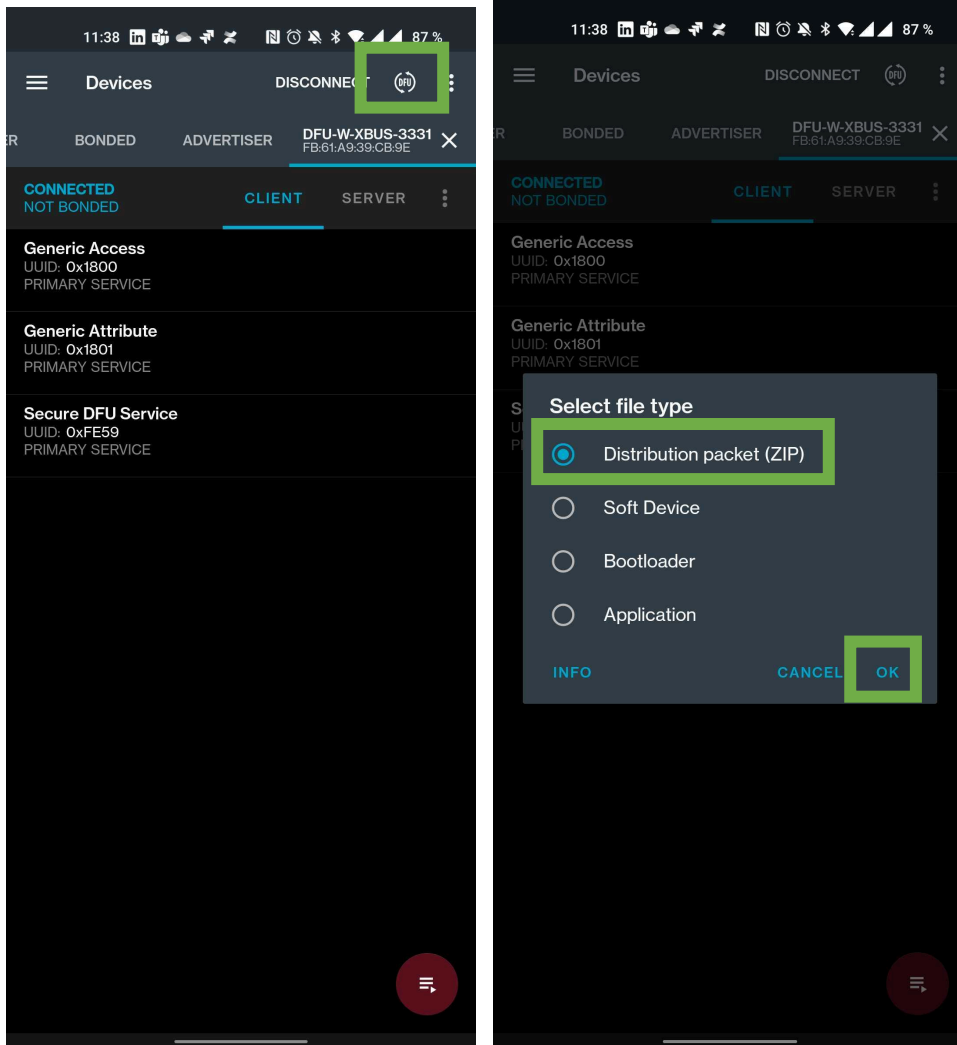
Step by step instruction manual update with Android

1. [Download](#) and store the new firmware to your phone. Save it in any location.
2. Download the app [nRF Connect for Mobile](#) from Google Play store.
Open the mobile app and activate Bluetooth on the phone.
3. On the LumenRadio device: Enter bootloader mode for the unit by pressing and holding down the push button for 20 seconds. When the mid LED turns red then release the button.
4. In the nRF Connect app: Scan and connect to the unit
Press Scan in the top left corner of the app, and press Connect on the W-Modbus-DFU or W-Xbus-DFU or DFU-W-Xbus-1XYZ unit in the list. If the device does not show up in the list of found devices, redo step 3 and make sure you are not using any filters.



5. Select firmware to upload

Press the DFU symbol in the top right corner of the app. Select the file type Distribution packet (zip), press OK and then select the firmware you downloaded to your phone in step 1. The file transfer will start when you press OK in the file browser.



6. Wait for transfer to complete

Wait until the transfer is 100% and you get the status Application has been sent successfully from the app. Press Disconnect in the top right corner and wait for the unit to restart. The update is now complete!