

# How to make **wireless control** your superpower

**2024-10-15**

**2024-10-17**

CARL WÄPPLING, PRODUCT DEVELOPMENT MANAGER FROM LUMENRADIO

AUGIE PALMA & MIKE BOKHMAN FROM BC&S AUSTIN & BOSTON BRANCH

- 01 Challenges 2024
- 02 When and how?
- 03 Cost calculator
- 04 Reliability
- 05 Checklist



# Challenges 2024



## 01

# Challenges and opportunities in the industry



A lot of projects  
struggle with funding



Lack of skilled  
staff, particularly  
installers



High pressure on reducing  
energy and cost of  
operation

# How wireless can help you

## 02 Our products replace the MS/TP cable



# How wireless can help you

THREE INDUSTRY EXAMPLES

Cost efficient for schools & hotels

The only solution for heritage buildings

One week of work completed in 3 hours



# Manilla School, Stockholm Campus Konradsberg

## LUMENRADIO W-BACNET

- Control room temperature with BACnet MS/TP
- 126 nodes on 5 separate networks
- Important that renovation can be done without disruption the running of the school
- 81 000 sq.ft.
- Customer: Kieback & Peter





# Lakeway resort, Austin TX

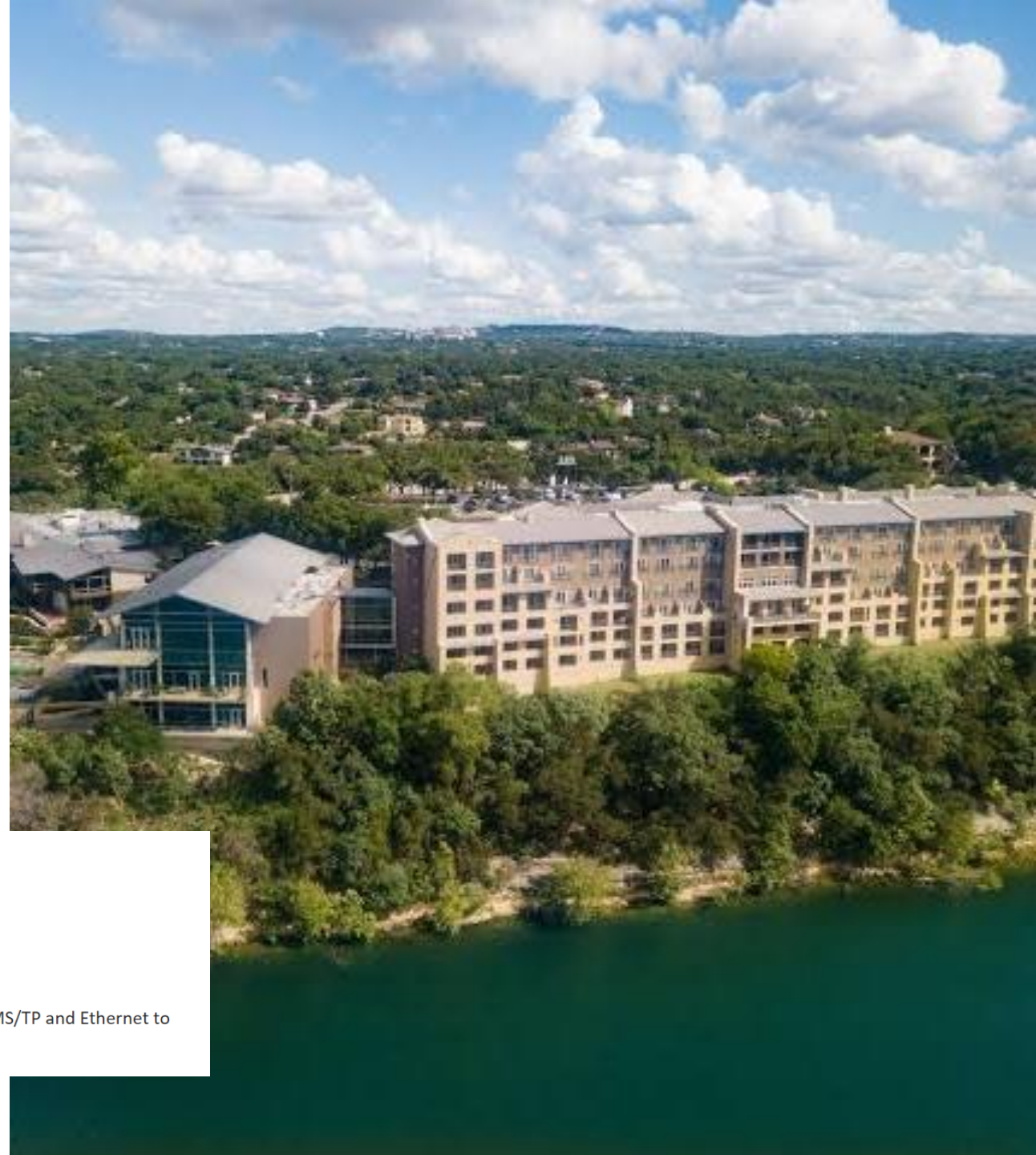
## LUMENRADIO W-BACNET

- 40 FCUs on 6 floors (split into 6 W-BACnet networks)
- No repeaters needed or support from LumenRadio
- Augie's experience from BC&S

Building is 6 story concrete construction. Each floor is approximately 9 ft floor to ceiling and 12 ft floor to deck. The stats will be located above the ceiling in the return of each FCU in the hallway. There are between 6-8 FCUs per floor for a total of 40 FCUs. (See attached pics for layout of each floor.)

The building is approximately 400ft long.  
Each room is approximately 15ft wide.

There is an IDF Room in the middle of each floor where we will locate the gateway or a hub. (We already have MS/TP and Ethernet to each of the IDF rooms)



# Starret Lehigh Building, NY, USA

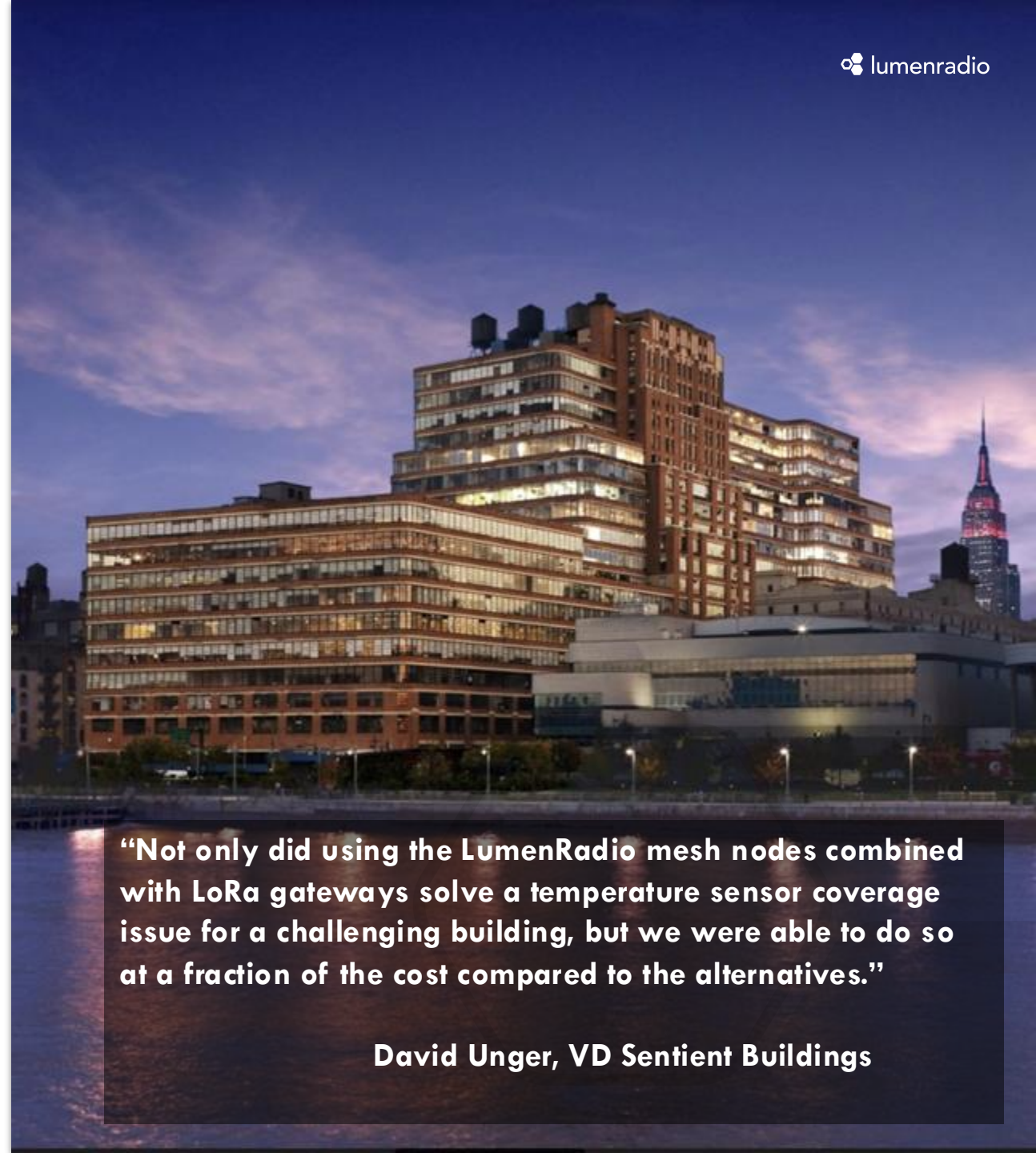
## WIRELESS BACNET for heritage buildings

**CUSTOMER:** Sentient Buildings and RXR Reality, large property owner in New York (e.g. 75 Rockefeller Plaza, 5 Times Square and 230 Park Ave).

**CHALLENGE:** Find a reliable wireless solution for a building of 2.3 Million sq.ft m2 in a challenging wireless environment.

**SOLUTION:** 50 LumenRadio W-BACnet units over 18 floors as a “backbone” for BACnet/LoRa gateway which reached LoRa temperature sensors.

**BENEFITS:** Significant time and cost savings. A reliable solution which will be reemployed for many other projects. Avoided drilling holes in 3ft thick walls.



**“Not only did using the LumenRadio mesh nodes combined with LoRa gateways solve a temperature sensor coverage issue for a challenging building, but we were able to do so at a fraction of the cost compared to the alternatives.”**

**David Unger, VD Sentient Buildings**



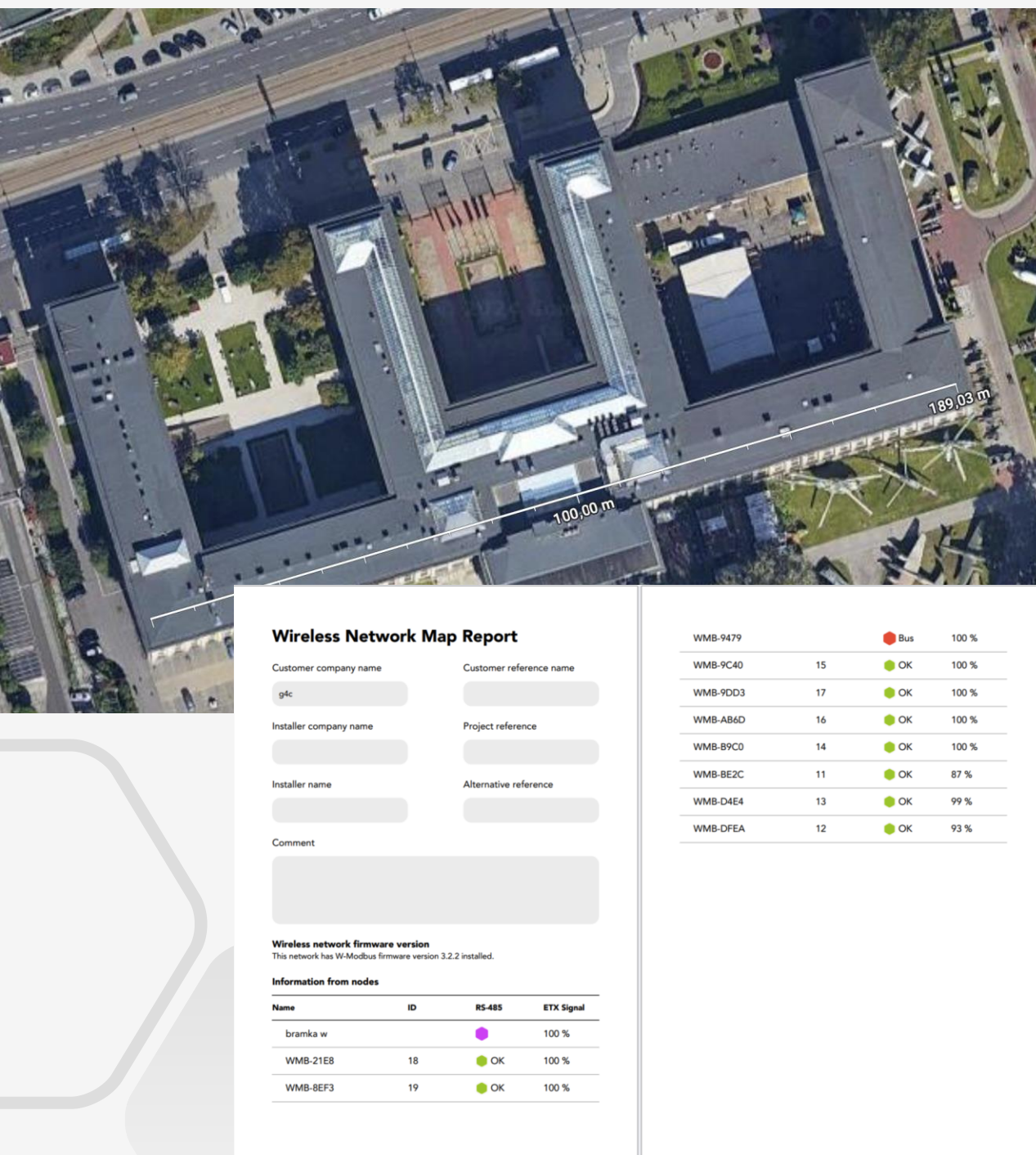
# National museum of Poland

## FROM MEASURE TO CONTROL

**CHALLENGE:** Find a reliable wireless solution for controlling VAVs in a critical environment. Already uses LumenRadio-based Proximal Proxima for measurement.

**SOLUTION:** 12 LumenRadio W-Modbus units over across the building 600 ft long with thick concrete soviet style walls. (Only 1 repeater needed)

**BENEFITS:** Significant time and cost savings. Running cables was prohibitive. Minimal closure time for the museum.





## Case study – Jersey City

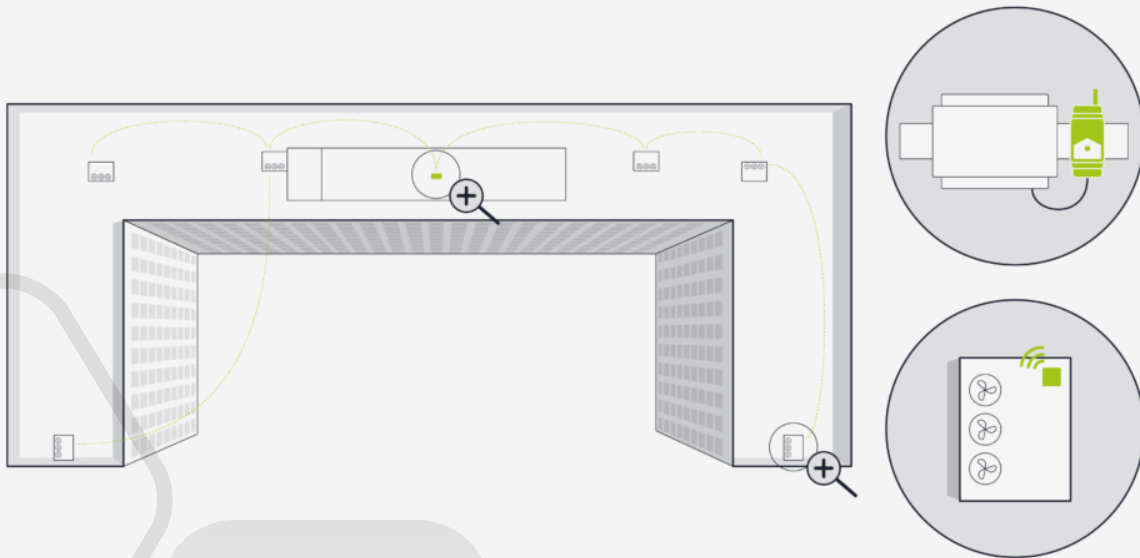
### A WEEK'S JOB IN 3 HOURS

**Partners:** KF Mechanical

**Challenge:** All BACnet nodes inside metal enclosures. Control room has approx. 4 inch metal walls. Cellular antennas create wireless interference.

**Solution:** W-BACnet device on each RTU and W-BACnet gateway with larger antenna inside control room.

**The Benefits:** Significant reduction in installation cost and time. Installation and completed in 3 hours. Wired solution would have taken one week.



# Cost calculator

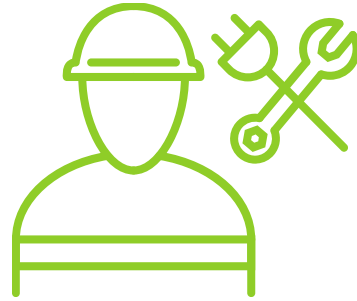
# 03

## Value chain benefits from W-BACnet



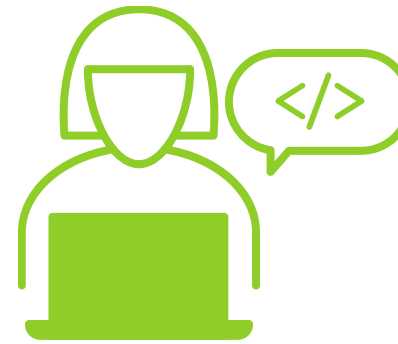
### Planner & Estimator

- ✓ Saves time mapping
- ✓ No rework requirements
- ✓ No variation in cabling time
- ✓ **Hassle free quoting**



### Installer

- ✓ Saves 70 % of wiring time
- ✓ **Can do 2x jobs**
- ✓ Flexible installation



### System integrator

- ✓ Faster troubleshooting
- ✓ **Flexible commissioning**
- ✓ Easier hand-offs
- ✓ Scalable over time



### Municipalities/ Property owner

- ✓ Retrofitting becomes easy
- ✓ Saves time and money
- ✓ Optimizes energy usage
- ✓ **Enables smaller sites**



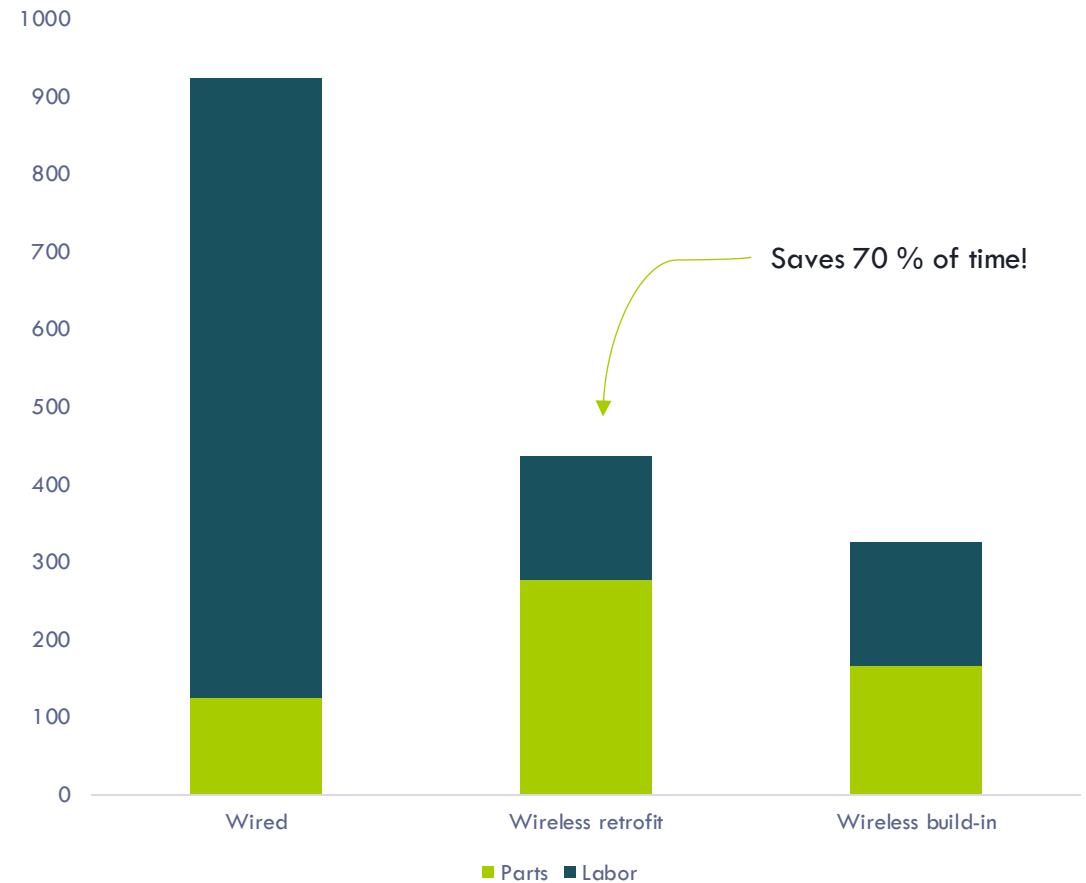
# 03

## Are you seeing the whole picture?

### THE BENEFITS OF WIRELESS BACNET

- Wireless enables control for
  - Installation - running conduit
  - Commissioning
  - TROUBLE SHOOTING!
- Greater flexibility
  - Installation and renovation
  - New applications
  - New services and offerings

Room controller installation cost (USD)



A background image showing a person's hands working on a green printed circuit board (PCB) in a workshop. The person is using red-handled tweezers to place or adjust a component on the board. Various electronic components like capacitors and resistors are visible on the board and in the blurred background.

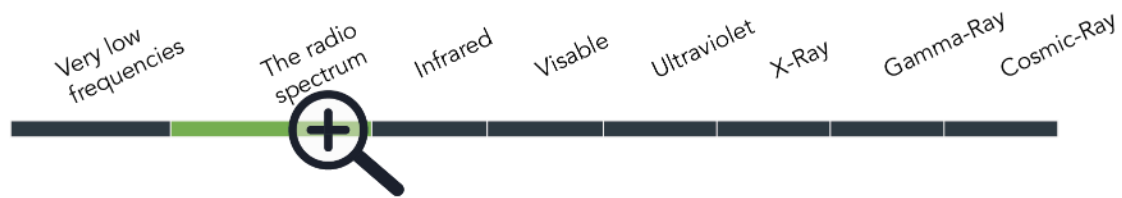
# Why it works

WHAT'S LUMENRADIO'S SECRET?

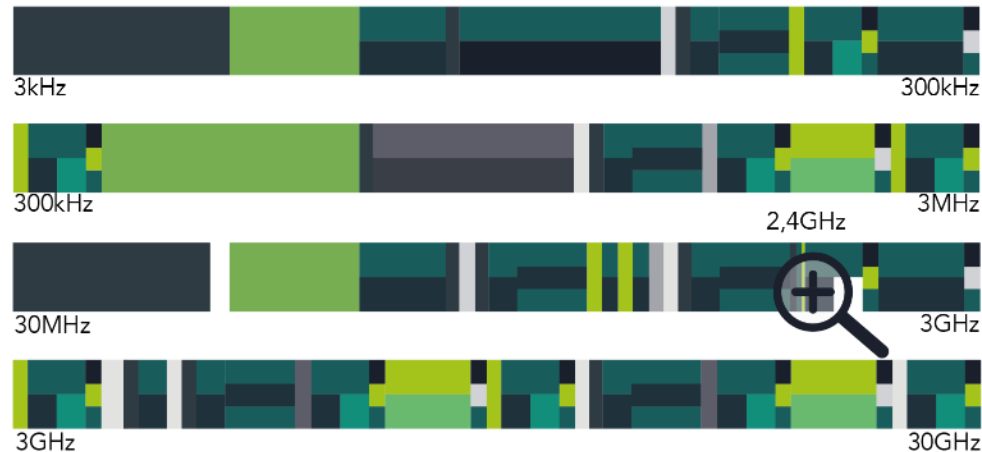
# Coachella 2012



# 04 Frequency spectrum



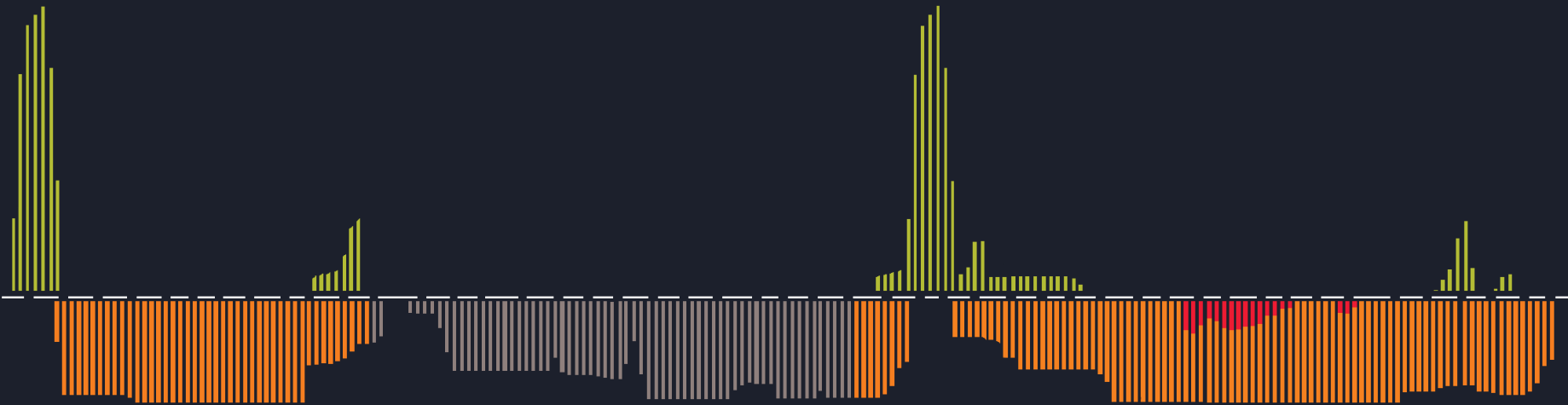
## The radio spectrum



### SOLVING THE INTERFERENCE OF THINGS

Frequencies are limited – as more wireless IoT devices are added, the frequency spectrum will get more congested, making wireless products have degraded quality of service or even stop working completely

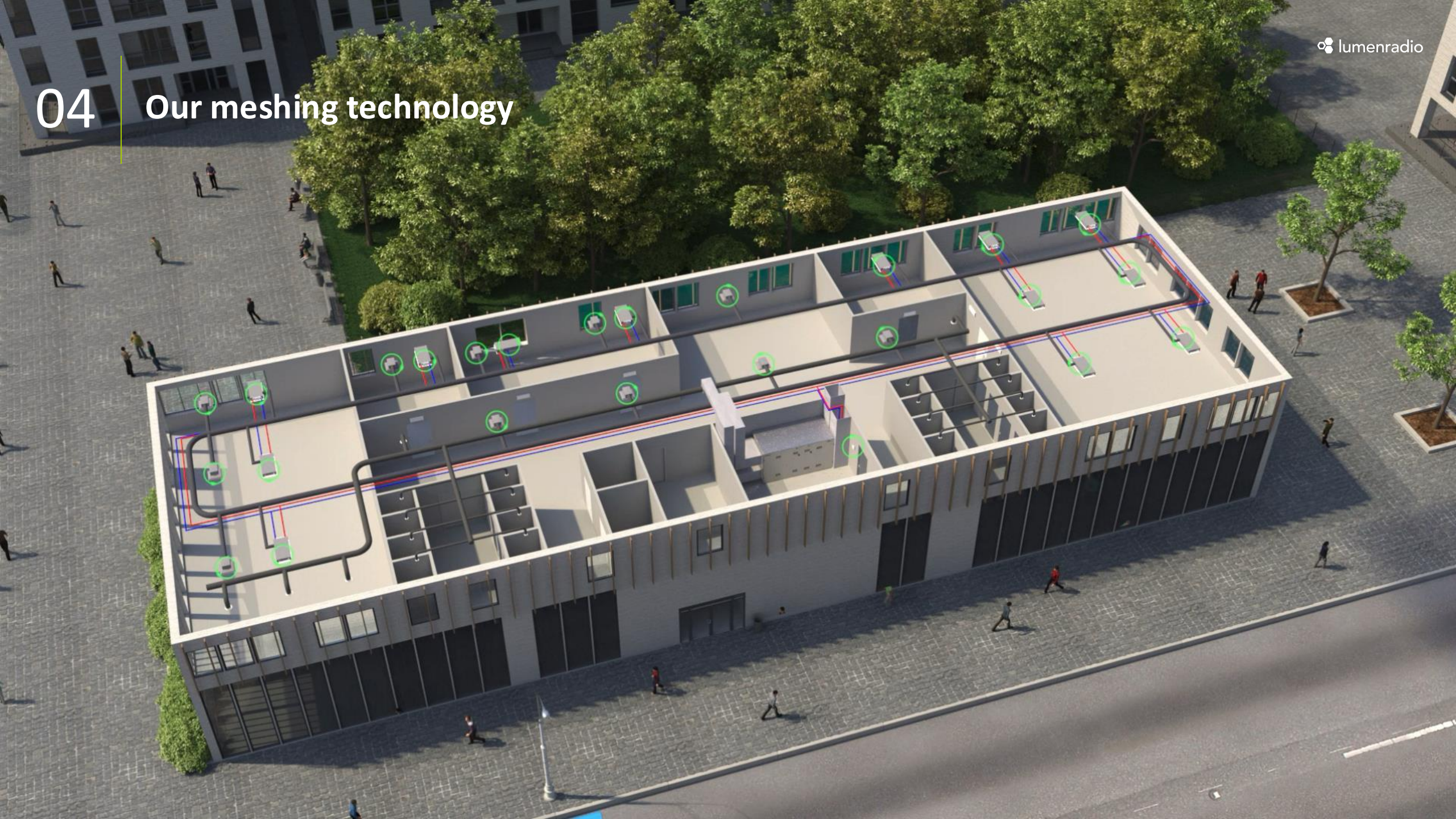
# 04 Cognitive Coexistence



Patented technology that predicts on a millisecond basis how the frequency spectrum will be utilized going forward and uses this to adapt to the best available and least congested frequencies.



# 04 | Our meshing technology





04

Trusted by

**Honeywell**

**Swegon**

**pd PRODUAL**  
*measure - be sure.*

PROLON

**TROX**

**ebm papst**

**Munters**

**SKF**

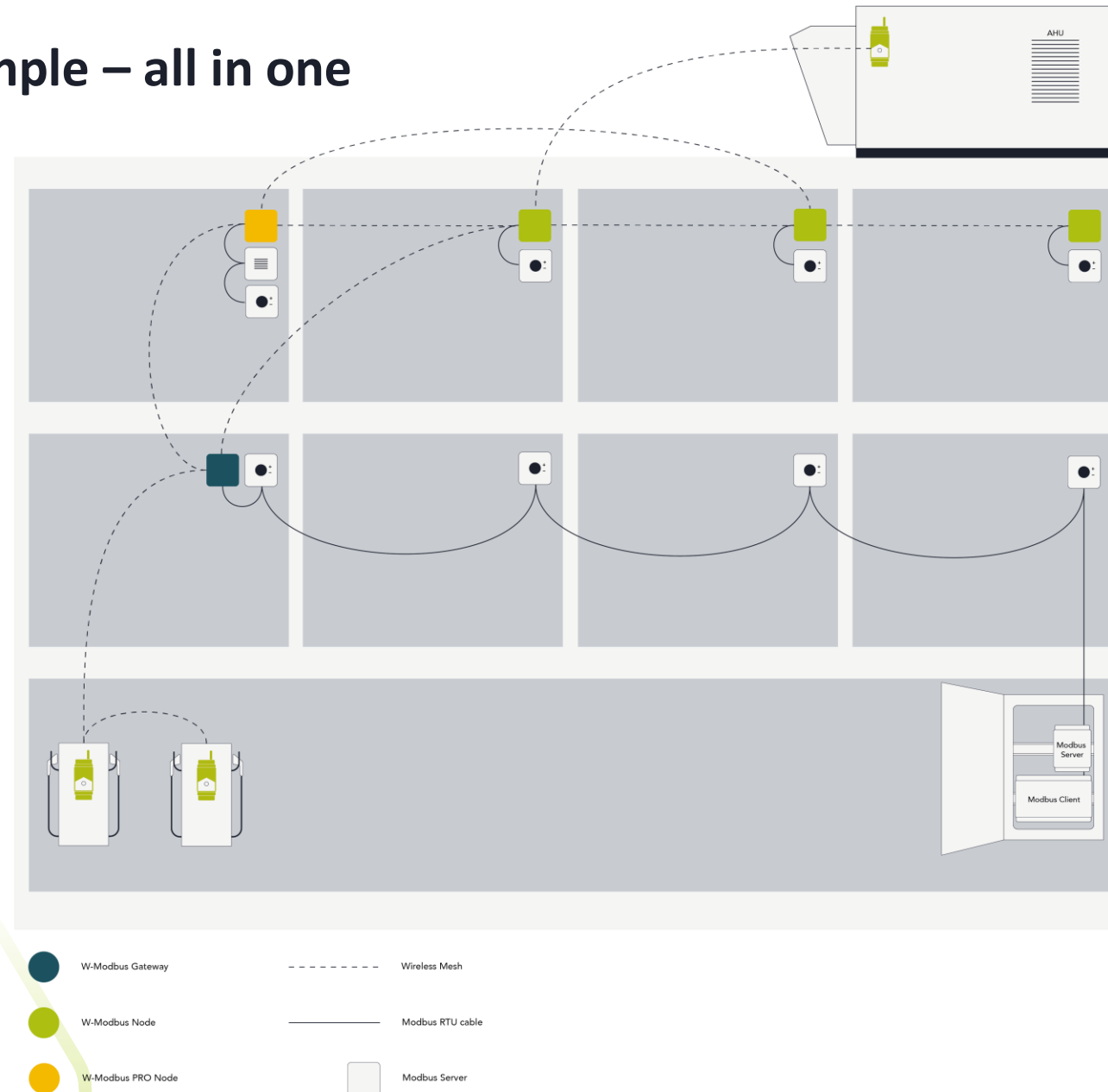
**systemair**

**Absolent**

**SAUTER**  
Für Lebensräume mit Zukunft.

**ERTEK**

# 04 Application example – all in one

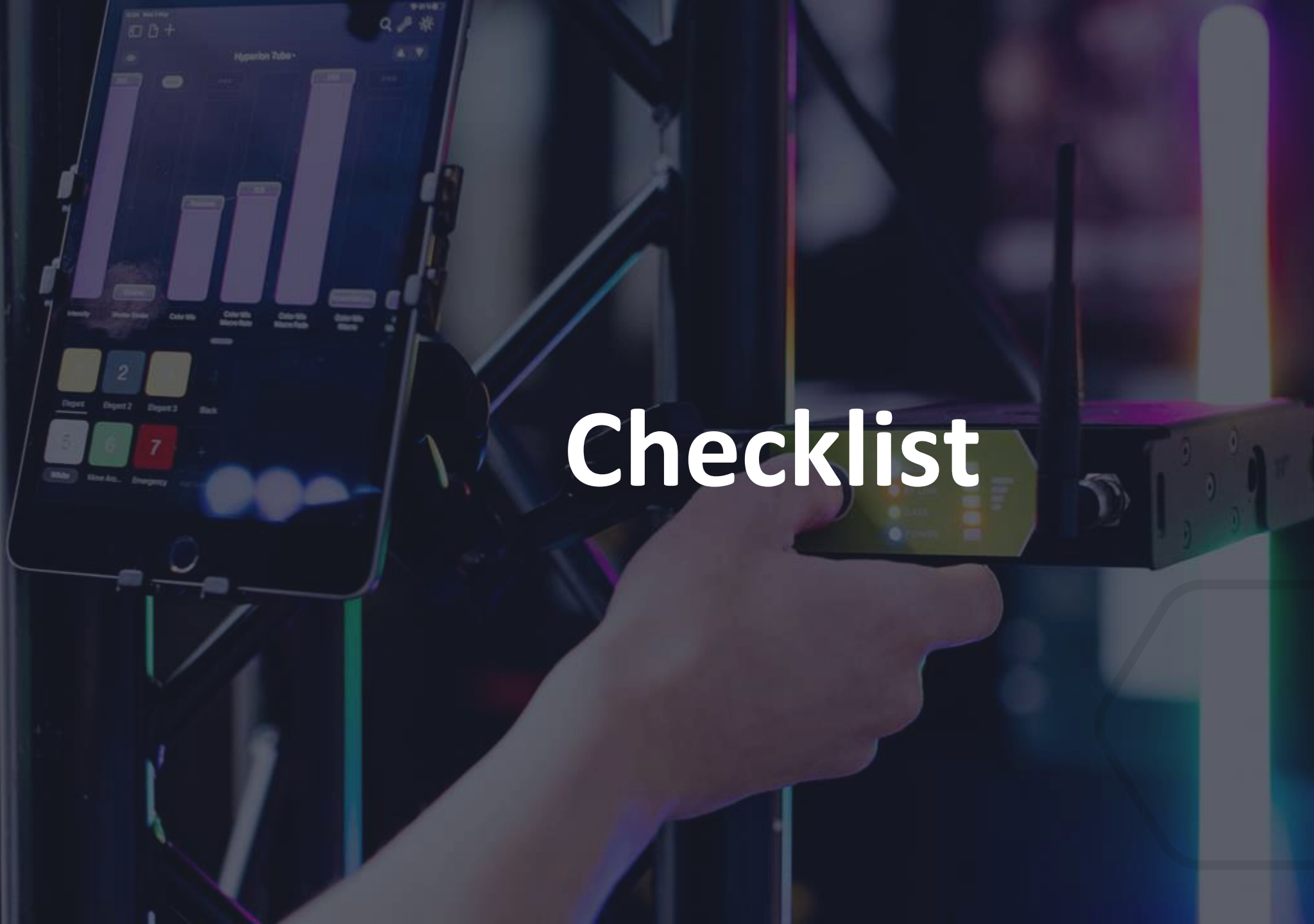


# 04 Our products replace the MS/TP cable





# Checklist



# 05 What makes for a quick and easy wireless installation?

## QUESTIONS ABOUT THE CONTROL NETWORK

- What's your application?
- How many units?
- How close together?

## QUESTIONS ABOUT THE LOCATION

- Indoors or outdoors?
- What is the control cabinet made of?
- Expected range?
- What are the walls made of?

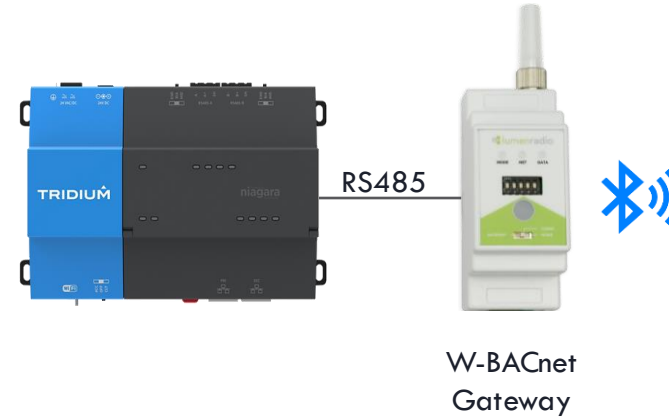
... but, there is one more thing!

After the webinar, you'll get a full checklist in a handy PDF.

# 05 Bluetooth Mobile App; Integration Secret Weapon

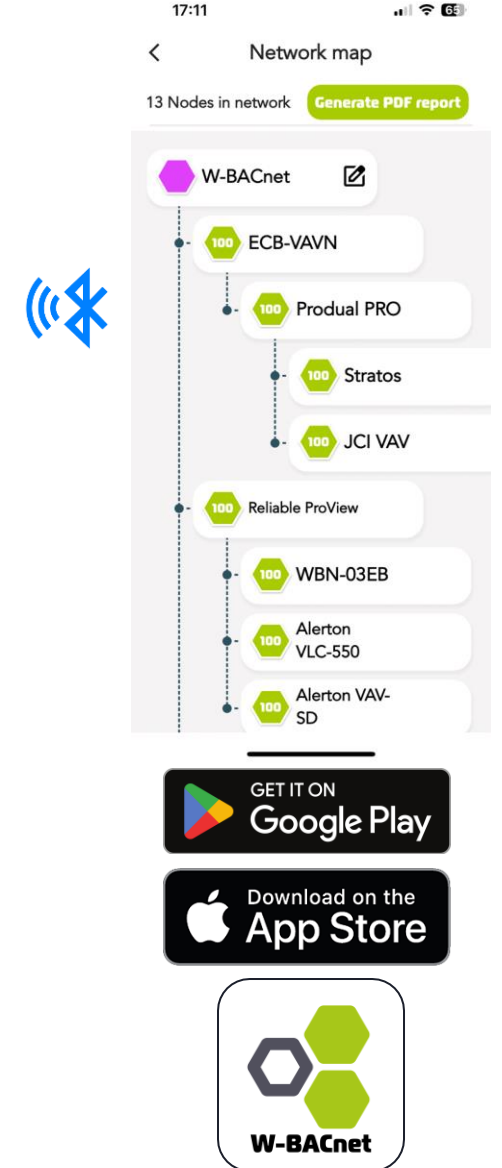
## ACCELERATE YOUR INSTALLATION

- Troubleshoot BUS connections without manual checking each BACNet device
  - BACnet Address
  - Ability to Rename devices



## FIRMWARE UPDATES FOR LIFE

- Updated the entire network with a click of a button
- The update takes around 30 min to 2 h to propagate to all nodes



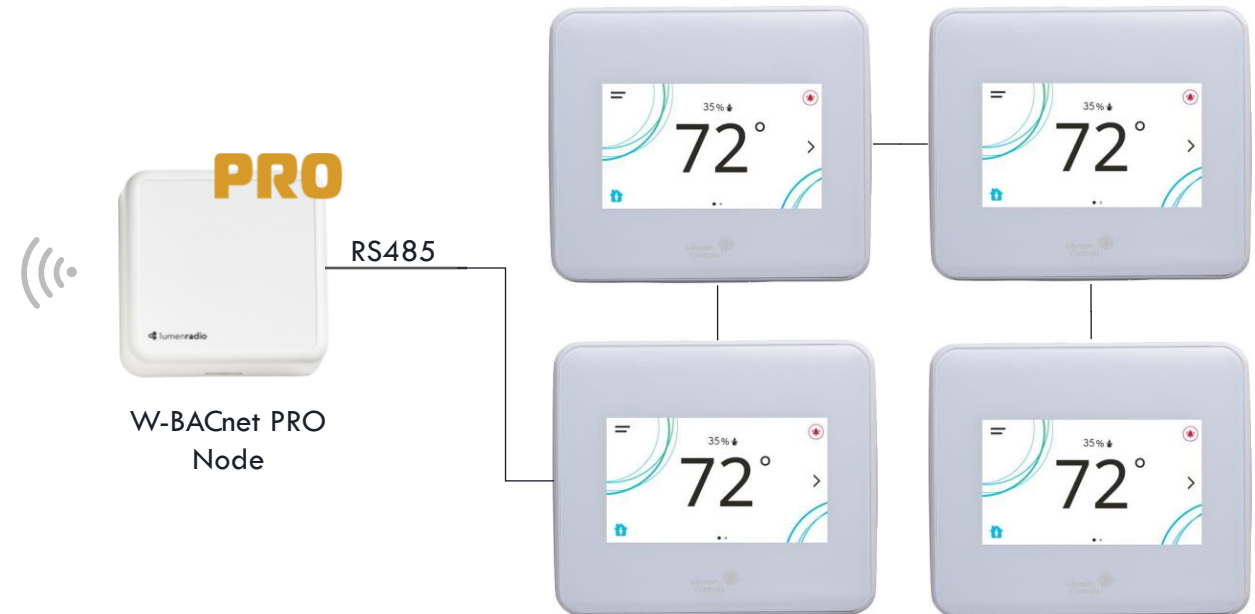
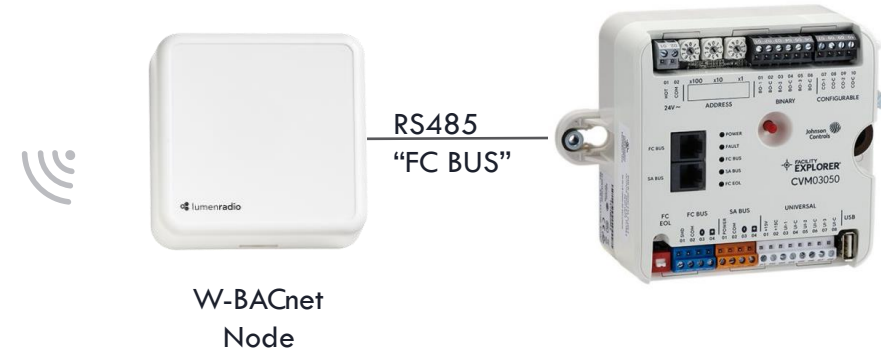
You will need 3.2.0+ on the gateway for iOS 17 devices to connect.



# How to do FX – Wirelessly

## NATIVE BACNET DATA INTO BAS

- Plug-n-Play; No programming required
- No changes to filepath or Metric ID within BAS.
- No need to change BAS configurations with no recognizable change to BACnet network topology



A background image showing a male technician in a dark shirt smiling while working on a piece of electronic equipment. He is holding a red multimeter. The setting appears to be a workshop or lab with various tools and equipment visible in the background. The image is overlaid with a semi-transparent dark blue filter.

# Thank you!

FOR EVERY CABLED INSTALLATION, WE BELIEVE THERE IS A WINNING  
WIRELESS SOLUTION, POTENTIALLY YET TO BE EXPLORED.

#WirelessWithoutWorries



[lumenradio.com](http://lumenradio.com)